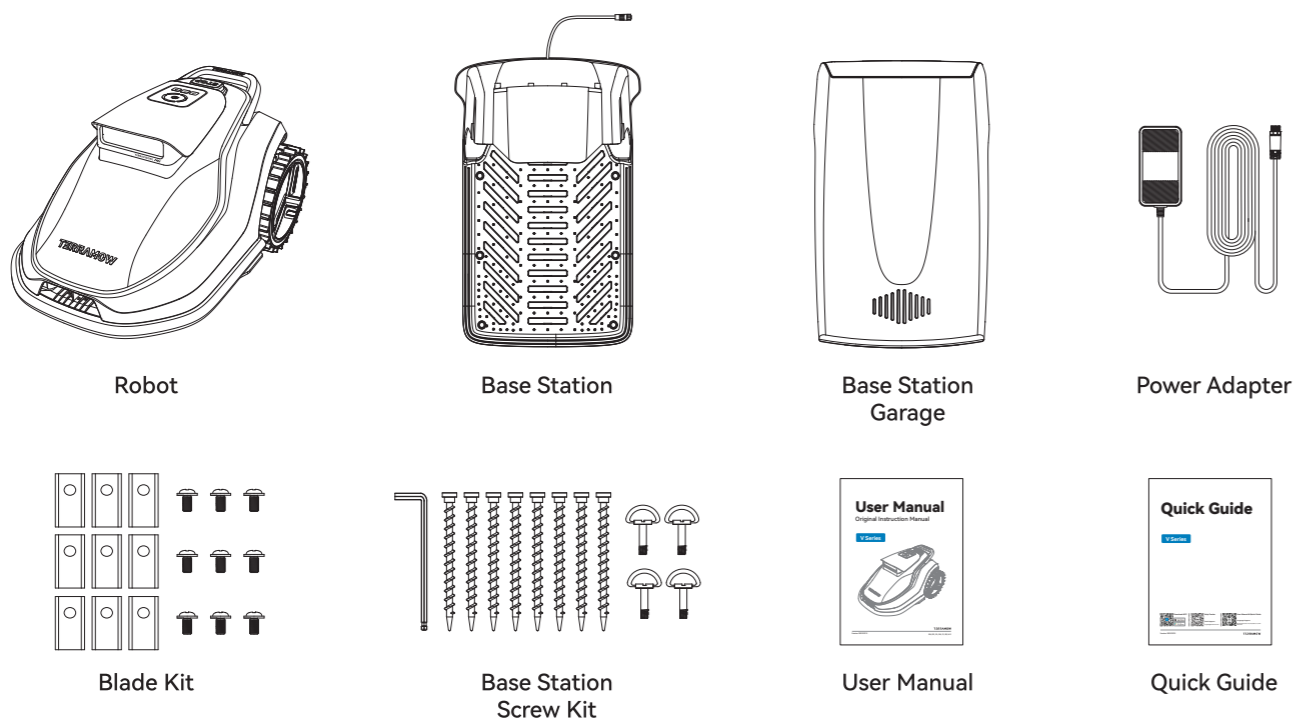
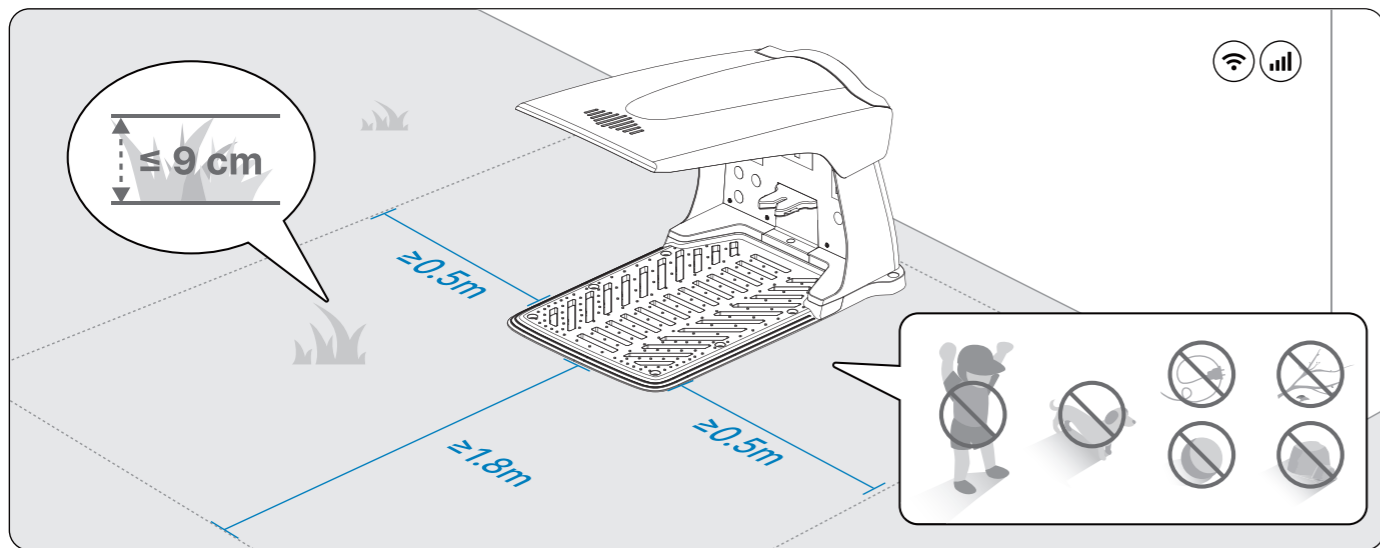


1. WHAT'S IN THE BOX

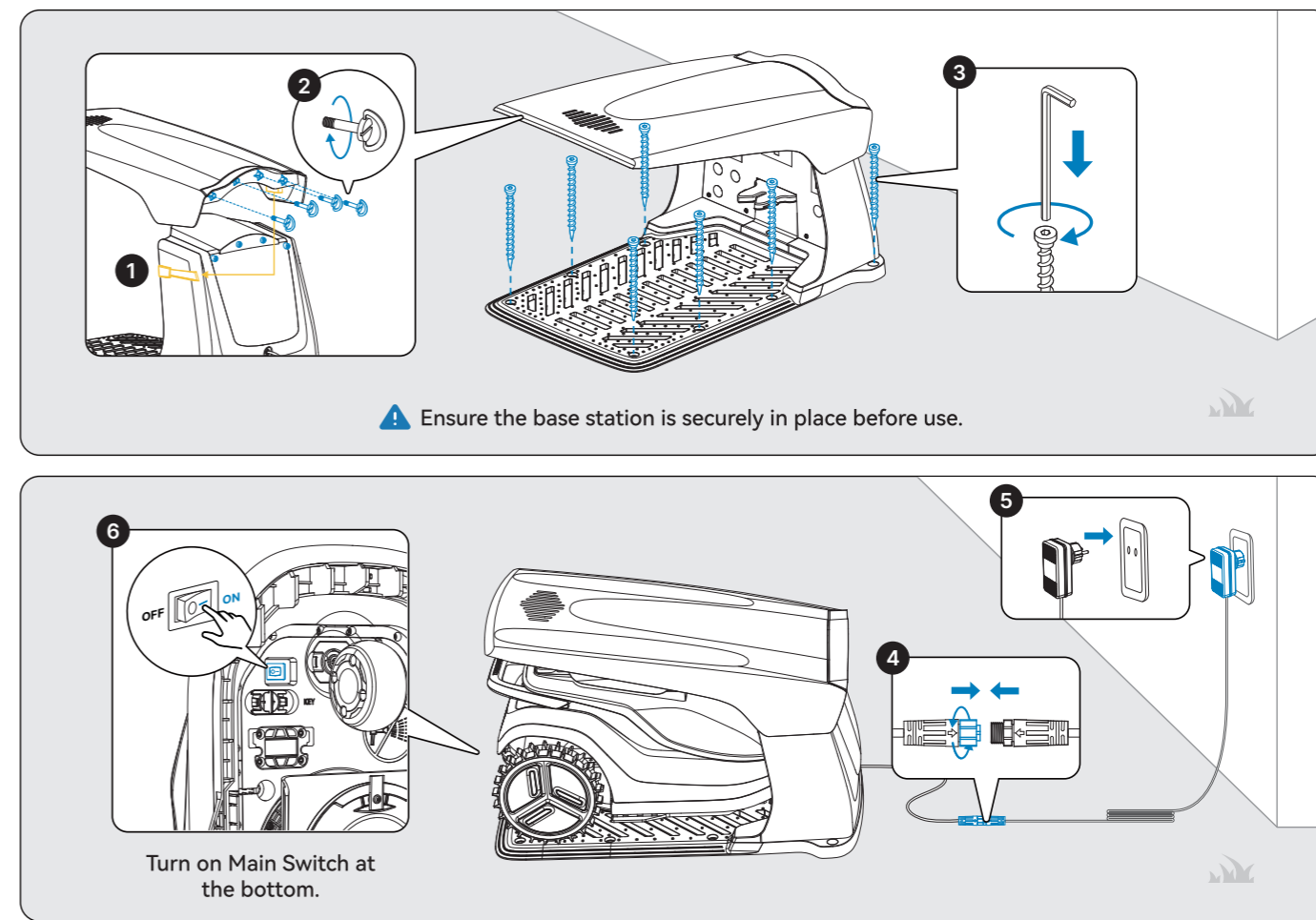


2. BEFORE USE



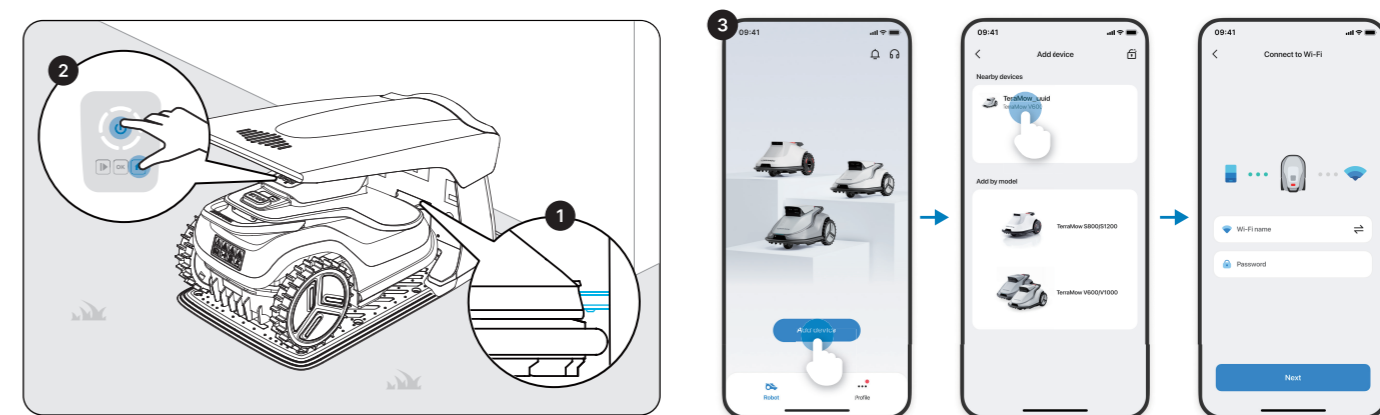
- Remove small obstacles like toys, cables, branches, or piles of leaves.
- Trim the grass to 9 cm or shorter.
- Keep children and pets away from the robot.
- Place the base station on a flat lawn with no slopes, stones, or steps.
- Ensure no obstacles (e.g., houses or trees) within 0.5 m on both sides and 1.8 m in front of the base station.
- Ensure the area has reliable 2.4G or 5G Wi-Fi coverage.

3. INSTALLATION





















4. NETWORK SETUP



- 1 Place the robot on the base station.
- 2 Press and hold both and buttons for 2 seconds until the light panel starts flashing white.
- 3 Follow the app instructions to complete the robot's network setup.



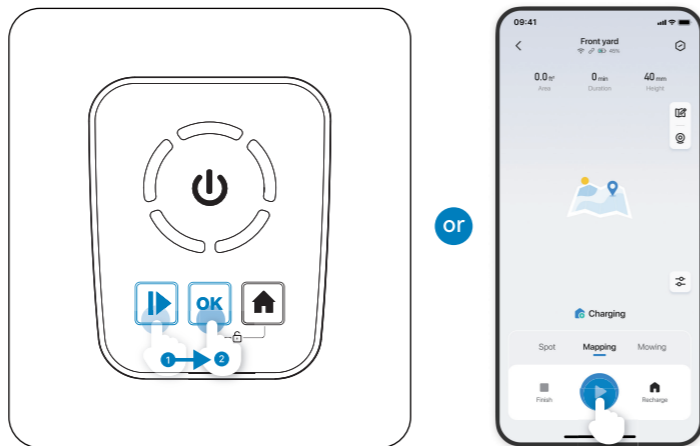
5. MOWER OPERATION

START TASK	Press  , then press 
START SPOT MODE	Press and hold  for 2s, then press 
PAUSE	Press  or  or  or 
RETURN TO STATION	Press  , press  , then press 
EMERGENCY STOP	Press 
CONFIGURE WI-FI CONNECTION	Press and hold both  and  for 2s
ACTIVATE/DISABLE THE CHILD LOCK	Press and hold both  and  for 2s
RESTORE FACTORY SETTINGS	Press and hold both  and  for 5s

6. START FIRST MAPPING

- Place the robot on the base station and ensure it is charging (panel light green).
- Start mapping by pressing  then  on the panel, or via the app.

On the first mapping, the robot automatically maps a complete lawn zone, then returns to the base to charge. Additional zones can be added afterward.

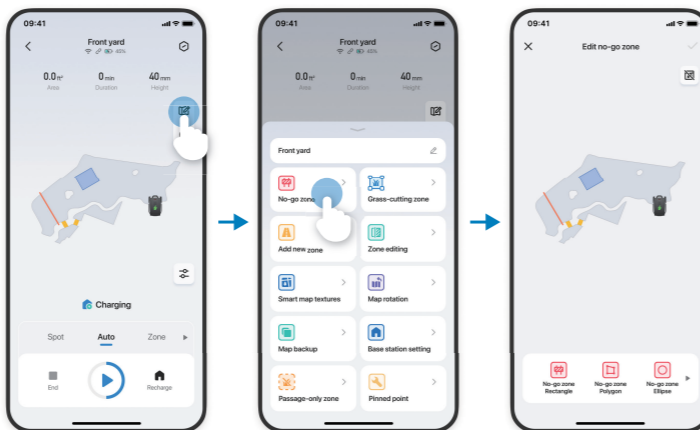


7. NO-GO ZONE SETTINGS

Prevent the robot from entering specific areas by setting up no-go zones.

- Drops or edges over 3 cm.
- Low flowerbeds or valuable plants.
- Ropes, such as tent lines or clotheslines.
- Irrigation equipment like hoses, pipes, or sprinklers.
- Electrical wires or devices.

Pause the robot before creating no-go zones or virtual fences. Then draw them directly on the map.

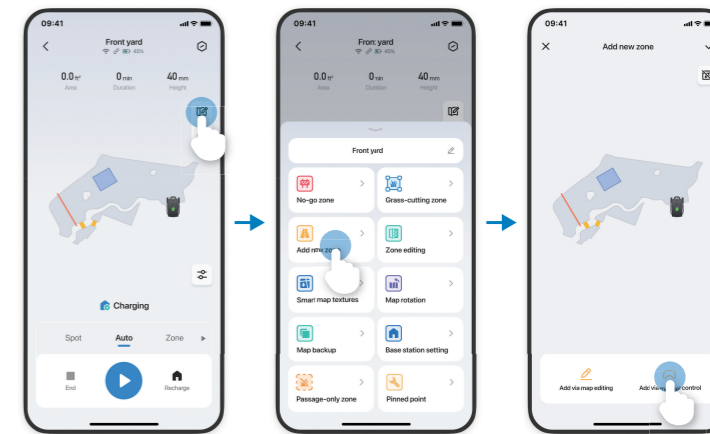


8. ADD NEW LAWN ZONE

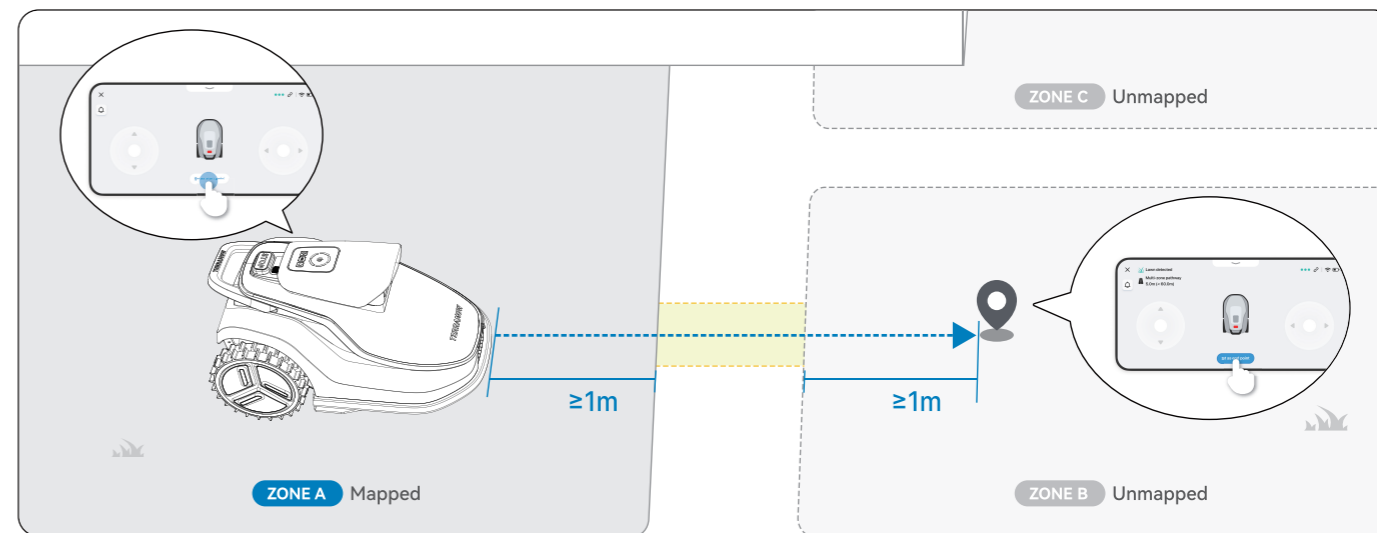
Note: Add new lawn zones after first mapping.

To add new lawn areas, set up multi-zone pathways in the app. These allow the robot to move between separate zones and work across all areas.

Please end the current task before configuring the pathways.



- On the mapped lawn zone, remotely drive the robot to the pathway start and set it in the app (clear of obstacles, >1 m from edge).
- Guide the robot along the pathway to the new lawn zone.
- Set the pathway end in the app (clear of obstacles, >1 m from edge). The robot will then automatically map the new zone.



9. CUSTOMER SUPPORT

- Tap 'Feedback' in the app.
- Describe the issue and submit device logs (keep stable Wi-Fi; upload may take time).
- Our support team will respond as soon as possible.

